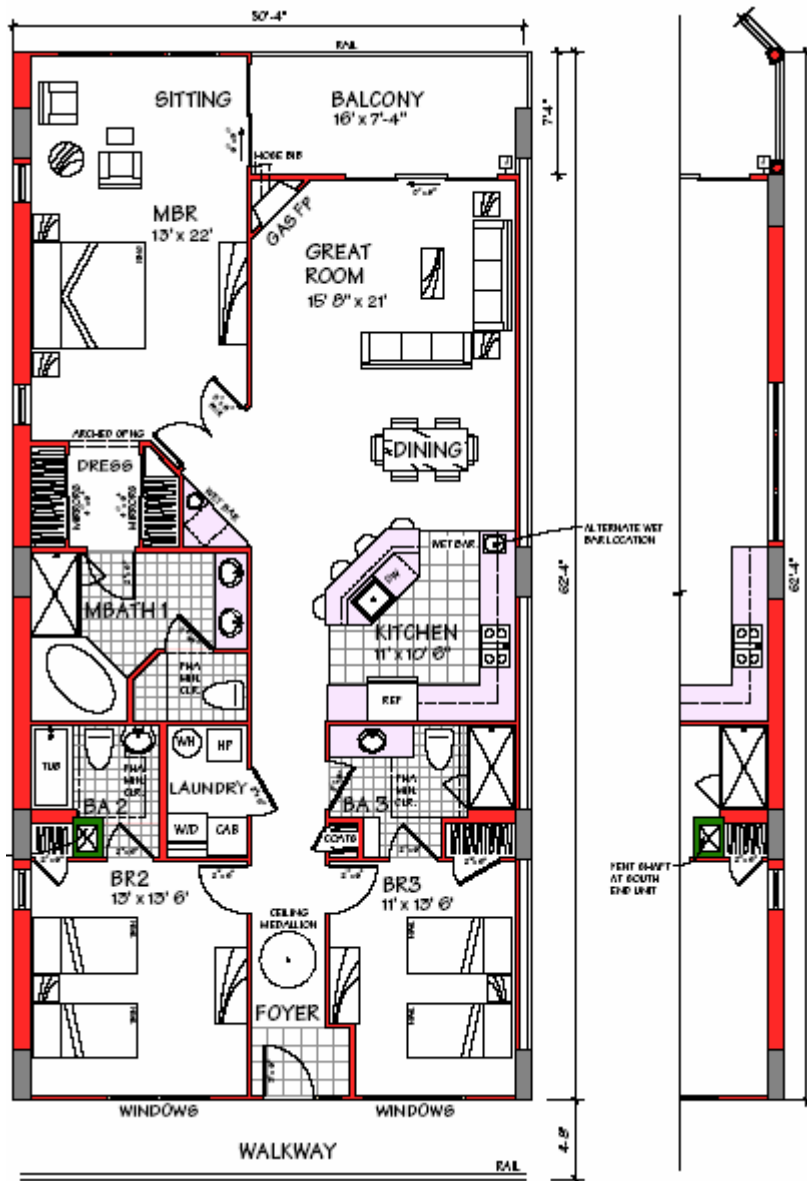
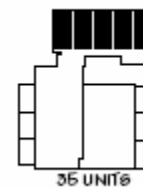
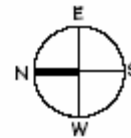


# Belmont Towers

Where the Past Is Now the Future in the Heart of Ocean City



NOTE: BALCONIES ON LEVEL 2 ARE LARGER (SEE TABULATION)



## 3BR End Unit

**UNIT 1 - NORTH END UNIT**  
 (SOUTH END UNIT SIMILAR)  
 AREA: 1772 SQ FT  
 BALCONY AREA: 119 SQ FT

**UNIT 1 - SOUTH END WALL**  
 AREA: 1772 SQ FT  
 BALCONY AREA: 176 SQ FT

### BOARDWALK TOWER CONDOMINIUM



DORCHESTER ST. & THE ATLANTIC OCEAN  
 PHONE: 888.9.BELMONT OR 410.524.6400  
 FAX: 410.524.1180 EMAIL: KEVIN@MARKF.COM